

# ProCUT-40



1 year warranty

**PATON PROCUT-40 PLASMA CUTTING MACHINE** is designed to manually cut metals and alloys with a thickness of up to 12 mm with a plasma arc in the air stream. This machine of the «Professional» series is powered by 230 single-phase mains, has a big color LCD screen with a multilingual interface, and has an increased duty cycle – up to 70%. A pneumatic ignition system makes it possible to use this machine in the sensitive to electromagnetic vibrations environment



## Process



## Input



## Output



## PARAMETERS:

	ProCUT-40
Rated supply mains voltage 50Hz, V	230
Rated current consumption from the mains phase, A	30
Rated cutting current, A	40
Duty cycle	70% / at 40A 100% / at 33A
Power supply voltage range, V	185 – 250
Cutting current control range, A	15 – 40
Maximum thickness of metal cut, mm	12
Operating air pressure range, MPa	0,5 – 0,55
Air flow, l / min	not less than 135
Pilot arc	+
Plasma ignition voltage, V	270
Rated power consumption, kVA	5,2
Maximum power consumption, kVA	6,6
Efficiency,%	90%
Cooling	Adaptive
Operating temperature range	-25 ... +45°C
Overall dimensions, LxWxH, mm	470 x 200 x 320
Weight, kg	11,3

## ADVANTAGES



ADAPTIVE  
COOLING

IGBT

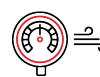
TECHNOLOGY



PILOT ARC



OVERVOLTAGE  
PROTECTION



PNEUMATIC  
IGNITION



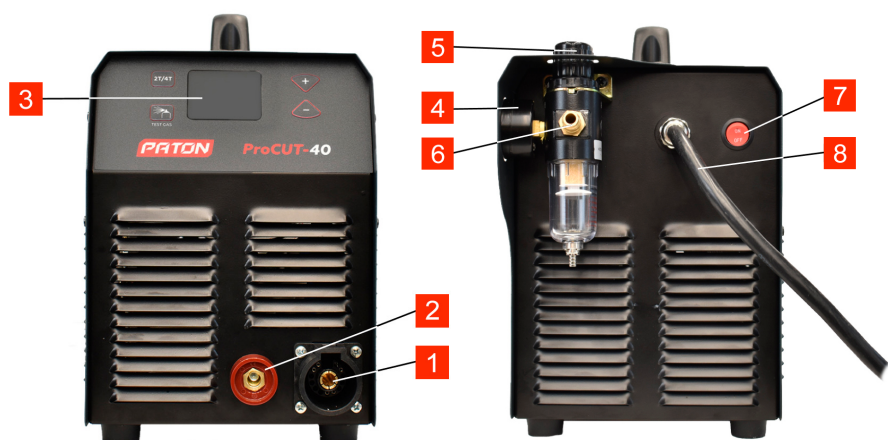
PLASMATRON  
PROTECTION SYSTEM



# FRONT CONTROLS



- 1 Connector for plasma torch
- 2 Socket "+" for connecting a cable with a "ground" terminal
- 3 LCD screen
- 4 Manometer of the machine reducer
- 5 Air pressure regulator
- 6 Fitting for connection pneumatic system or compressor
- 7 Power button
- 8 Cable for power supply 230V



# APPLICATIONS

The machine is used for the manual cutting of metal and alloy pieces of up to 12 mm thickness at metal warehouses, metal structures production enterprises, shipyards, and other manufacturing companies.



# COMPLETE SET

- 1 – Thermacut plasmatron
- 2 – Welding cable with ABICOR BINZEL «ground» terminal
- 3 – Fitting for quick-release gas hose
- 4 – PATON branded corrugated box

